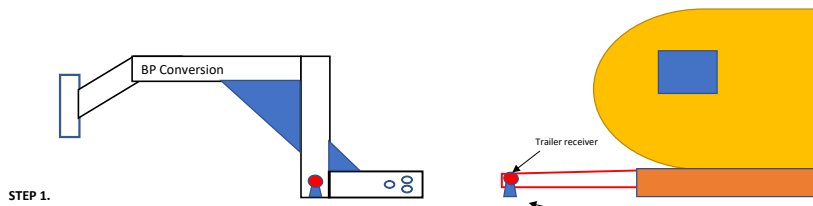


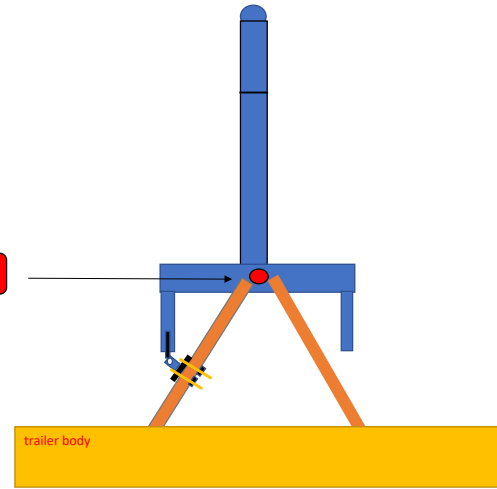
MOUNTING INSTRUCTIONS FOR BP CONVERSION



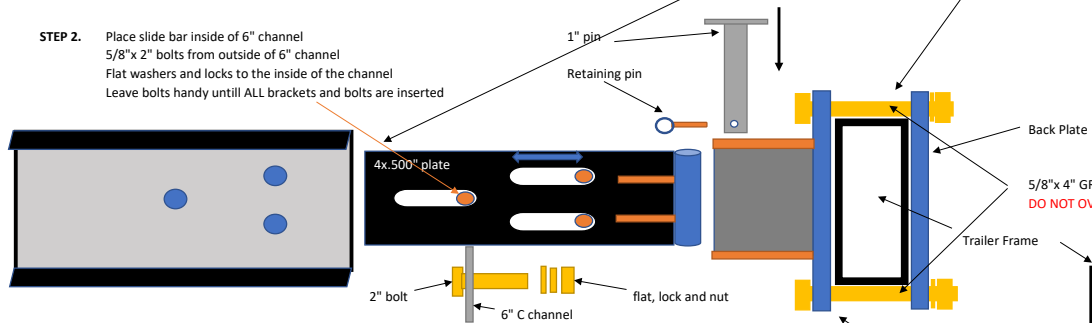
STEP 1.

Position conversion in front of trailer sliding back so that the ball coupler lines up with ball on conversion. Slide the two together and lower trailer onto ball and lock coupler. The "nose" of the conversions will not become level with the trailer until connected to towing vehicle.

BE WARE OF PINCH POINTS

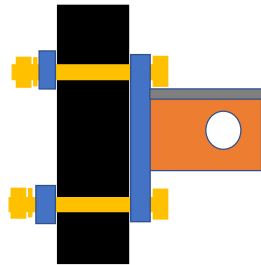


STEP 2. Place slide bar inside of 6" channel
5/8" x 2" bolts from outside of 6" channel
Flat washers and locks to the inside of the channel
Leave bolts handy until ALL brackets and bolts are inserted

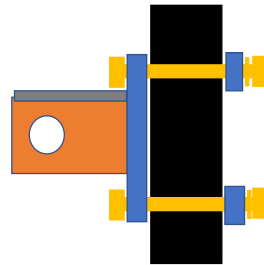


STEP 3.

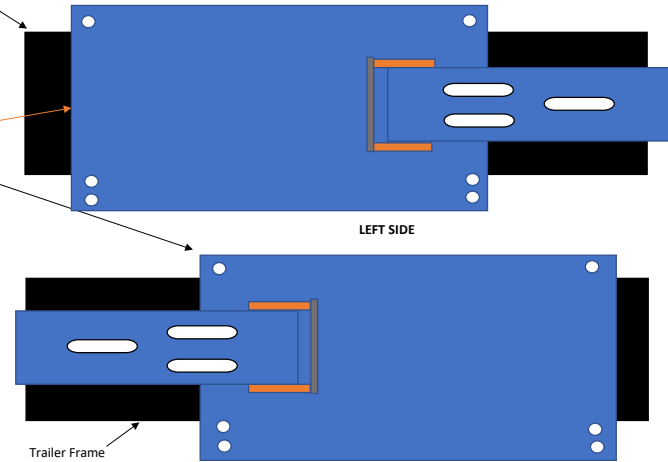
Line up 1" pin to holes in mounting bracket and install.
Make sure conversion is centered to the trailer and tighten ALL bolts.



TOP VIEW RIGHT SIDE

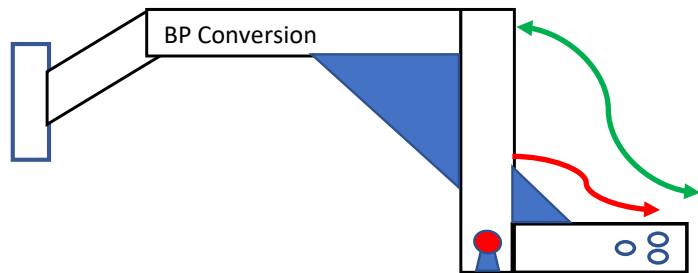


TOP VIEW LEFT SIDE



LEFT SIDE

RIGHT SIDE



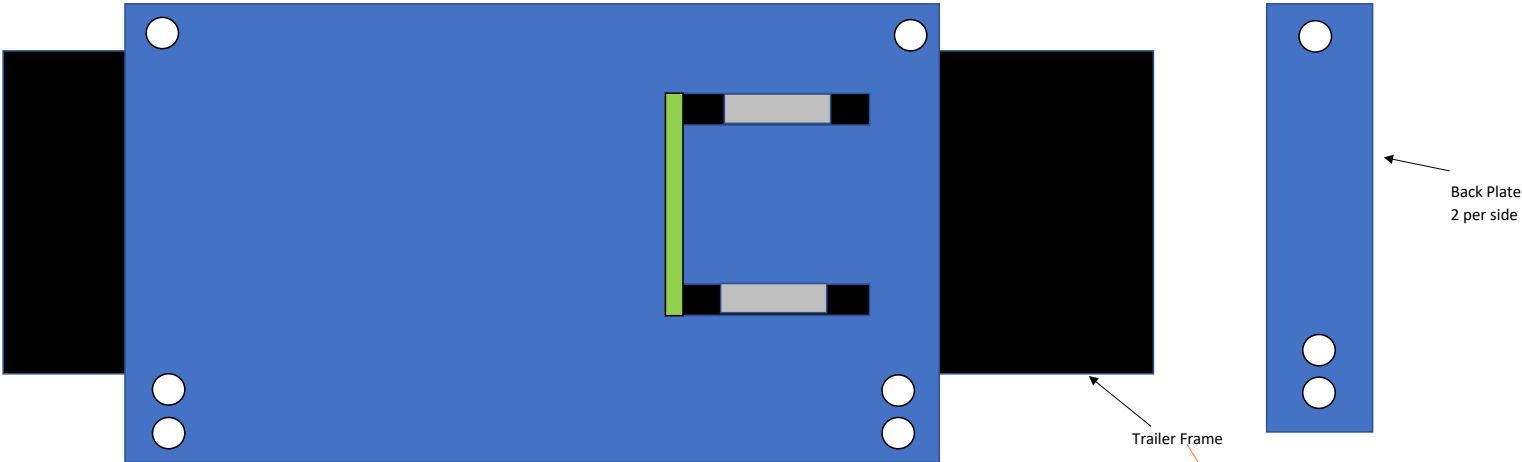
STEP 4.

Using existing trailer (male) 7 way trailer plug, make connection to conversion's (female) 7 way coupler.

Using the provided 14 ga. Connectors, splice into the trailers break away braking.

* washer shims may need to be placed top and bottom of slide bar in different positions than shown. Ex: 2 top 1 bottom.

Side Plate Install Instructions



Side Plate for left and right sides

